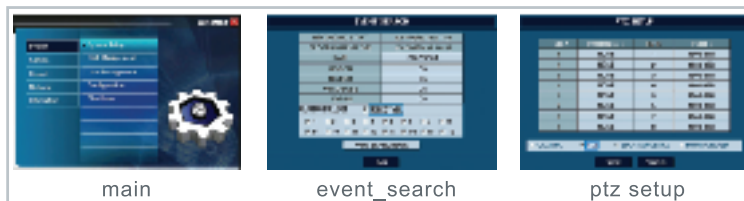


Trium X Series

16ch 8ch 4ch



Video Input: 16CH/8CH/4CH

Display Speed: 480/240/120FPS(NTSC), 400/200/100FPS(PAL)

Recording Speed: 480/240/120FPS(NTSC), 400/200/100FPS(PAL)

Trium X Series has a wide variety of strengths you have not experienced in current embedded platforms. Current research proves embedded is a feature rich and reliable design.

Each window for a channel can display live images or playback images.

"Smart Playback" is an attractive function that allows you to search and playback video recorded by motion triggered events. It is a convenient, time saving feature to search and playback video recorded over a long period of time. Another attractive feature is S.M.A.R.T which predicts HDD failure and protects important security data.

Features

- Based on the ASIC technology and Linux OS
- Real Pentaplex (Live / Recording / Playback / Networking / Backup simultaneously)
- Max. 480fps recording and Max. 480fps display
- Panorama Search and Smart Search
- Simultaneous Playback and Live View (Each window for a channel can display live images or playback images)
- Supports Dynamic/Static IP, DDNS
- Easy backup (Built-in CD-RW or DVD-RW / 2 x USB2.0 / Remote Backup by NDMS)
- Average file size: 1~2.5KB (Enhanced MPEG-4)
- Advanced Network S/W (NDMS) and remote S/W
- Graphic User Interface & Mouse Support (5000/7000 Series)
- Stackable Remote Controller (1~255 DVRs)

Functions

- Different recording speeds and quality setting for each channel
- Support 16 channel playback, simultaneous / smart / panorama playback
- Easy and Fast Search by Channel, Time, Date, Motion detection, Sensor events
- E-mail notification and Video image transfer triggered by Motion Detection or Sensor
- Powerful Network Solution (DHCP, DDNS, Static IP, PPP (PSTN))
- Various User Interface: USB Mouse, Keypad, Remote Controller
- Various Backup Supports: CD-RW, DVD-RW, USB HDD, USB Memory Stick, NDMS S/W
- Multi Server Monitoring / Management
- Remote Pan / Tilt Control, Digital Zoom, Full Screen Mode
- Live Audio out
- Playback, Setup, Alarm event

Specification

Model			Trium X7016/7008	Trium X5016/5008/5004	Trium X3116/3108/3104
Video	Inputs		16/8 CH	16/8/4 CH	16/8/4CH
	Outputs	16CH	CCTV Monitor, CRT(VGA) Monitor,S-Video, 16CH Loop/out, 3 Spot CCTV		
		8CH	CCTV Monitor, CRT(VGA) Monitor,S-Video, 8CH Loop/out, 1 Spot CCTV		
		4CH	CCTV Monitor, CRT(VGA) Monitor,S-Video, 4CH Loop/out, 1 Spot CCTV		
Monitoring	Display(NTSC/PAL)		Real Time		
	Screen split	16CH	1/4/7/9/10/13/16		
		8CH	1/4/7/8		
		4CH	1/4		
Recording	Compression		Enhanced MPEG-4		
	Resolution	NTSC	704X480 / 704X240 / 352X240		
		PAL	704X576 / 704X288 / 352X288		
	Rate(NTSC/PAL)		480FPS/400FPS	240FPS/200FPS	120FPS/100FPS
	Mode		Motion detection/Sensor/Schedule, Various Compression rates/ Recording Frame/ Motion Sensitivity		
	Storage media		Internal 3 x HDD (Option), CD-RW, DVD-RW (Option)		
	Audio		1 Channel, G.726 Compression		
Playback	Mode		Multi-channel playback (Max. 16ch), Simultaneous/Panorama/Smart Playback		
	Searching		By Channel, Time, Date, Motion Detection, Sensor events		
Remote Monitoring S/W			Remote S/W, Web based viewer, NXMS		
Alarm/Sensor			4/16, 1/8, 1/4		
Camera Control			Pan/Tilt, Zoom, Focus, Iris		
Back-up			USB 2.0 Ports, CD/RW, DVD-RW, NDMS Network backup S/W		
Hardware Spec.	Size (WxHxD)		400 x 400 x 88 (mm) : 2U Rack Mount Kit		
	Weight		14 lbs		
	Power		Max. 120W, 90V~264V (47Hz~63Hz)		
	UPS		External UPS (Option)		